

# Uni Connect: Data snapshot 2023-24

Uni Connect is made up of partnerships between universities, colleges and local organisations to help school and college students understand their higher education options. It provides experiences of universities and colleges and information on what higher education is like, including what courses there are and explaining the finance system.

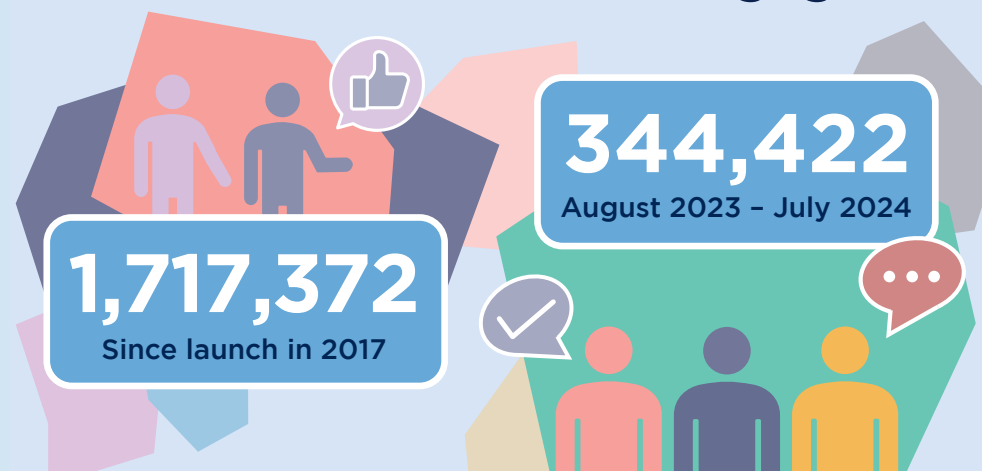
The programme aims to ensure that access to higher education is not limited by background and is targeted at learners who may face barriers to entering higher education.

This snapshot presents Uni Connect data for academic year 2023-24. This snapshot is a continuation of previous data reporting collected from programme monitoring and reports on similar categories as in the 2022-23 snapshot.

A new focus for Uni Connect from 2023-24 was on raising the attainment of school students in Years 7-11. Alongside offering information, guidance and experiences of higher level study in universities and colleges, Uni Connect partnerships also provided activities like tutoring, support with study skills and preparing for exams, to help increase attainment levels of eligible students. This was the first full year of attainment-raising activities and data, and there are new tables within the snapshot to reflect this.

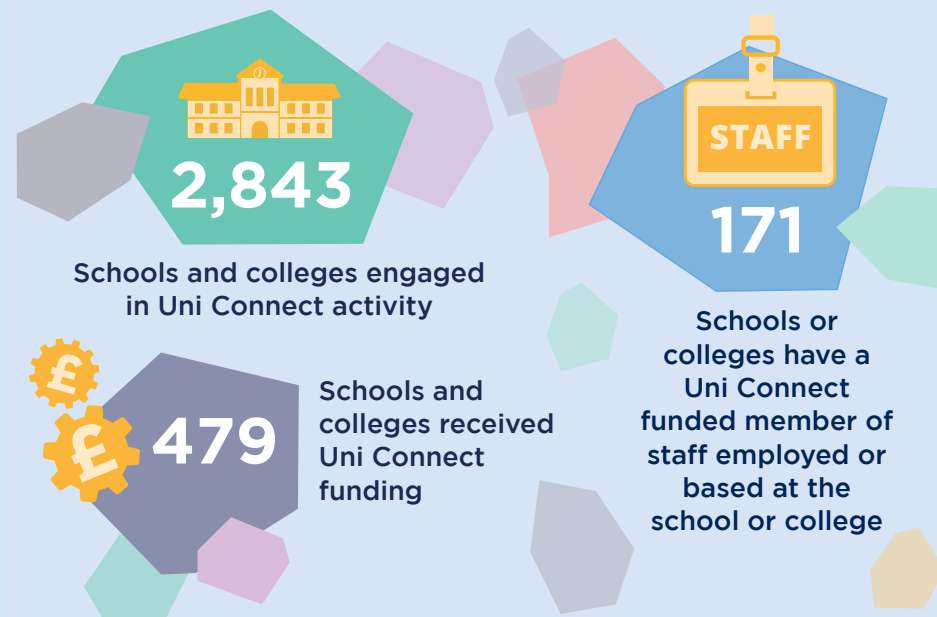
## Learner engagement

### Uni Connect learners engaged



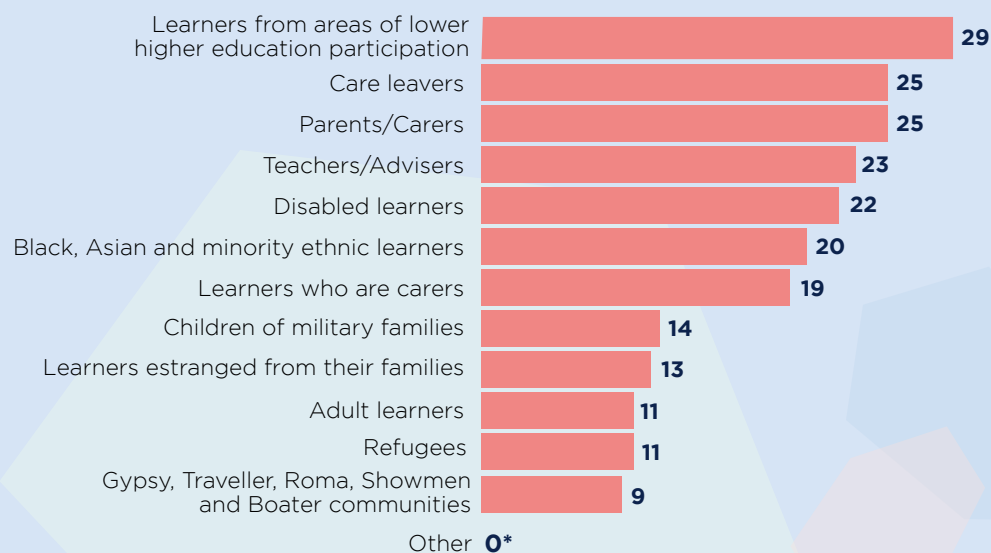
## School and college engagement

(August 2023 - July 2024)



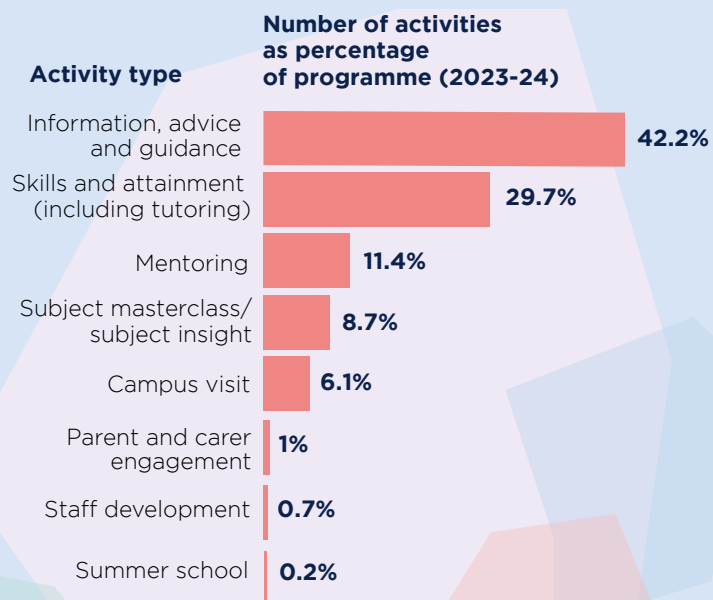
## Groups engaged in Uni Connect activities

Number of partnerships engaging with different groups through strategic outreach initiatives



\*This zero value has been kept for comparison purposes with previous years.

## Uni Connect activities delivered



"Taking part in [the Uni Connect Programme] helped me become more confident in school and think about my future positively."

Year 9 Uni Connect learner

"My young person has very little interest in education and higher education. This project is opening her eyes to what is available to her and her future in education."

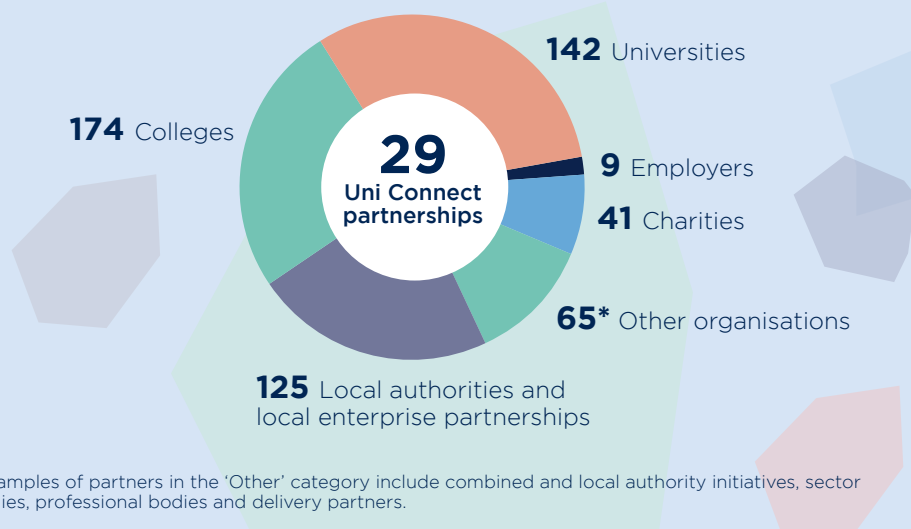
Carer of a Uni Connect learner

"I feel like, before this, I had no clue what I wanted to do. And now, I've got more options to consider. And I feel like I'm much more ahead than where I was before I joined the programme."

Uni Connect learner

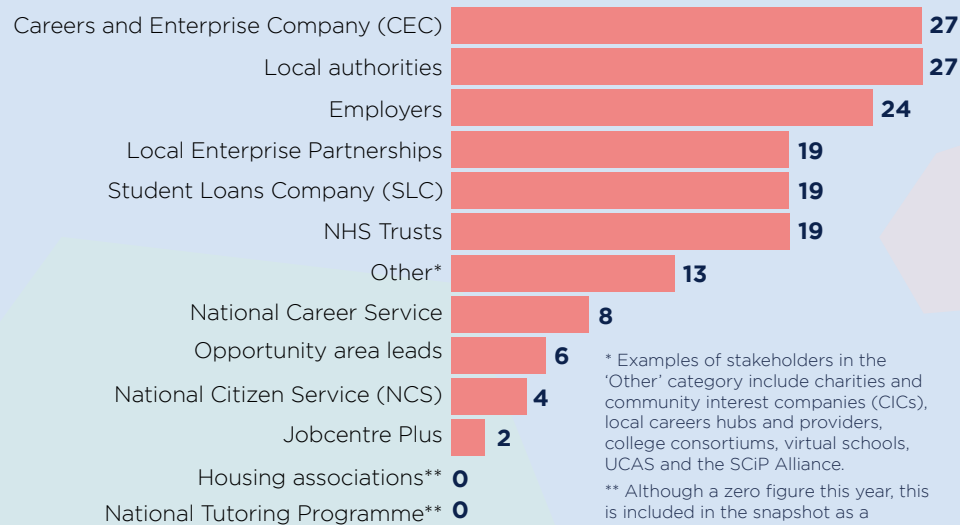
## Uni Connect collaborative partnerships

### Partners involved in Uni Connect



## Working with other partners

### Number of Uni Connect partnerships collaborating with other organisations



\* Examples of stakeholders in the 'Other' category include charities and community interest companies (CICs), local careers hubs and providers, college consortiums, virtual schools, UCAS and the SCiP Alliance.

\*\* Although a zero figure this year, this is included in the snapshot as a continuation of the data collected in the previous year.

"It's not often you work with a partner that really puts the young person at the centre of what they're doing. The Uni Connect partnership are passionate about higher education. They want to take a young person from an area that doesn't have a high intake of university entrants and support them to get there. It's been great working with them and watching the partnership go from strength to strength."

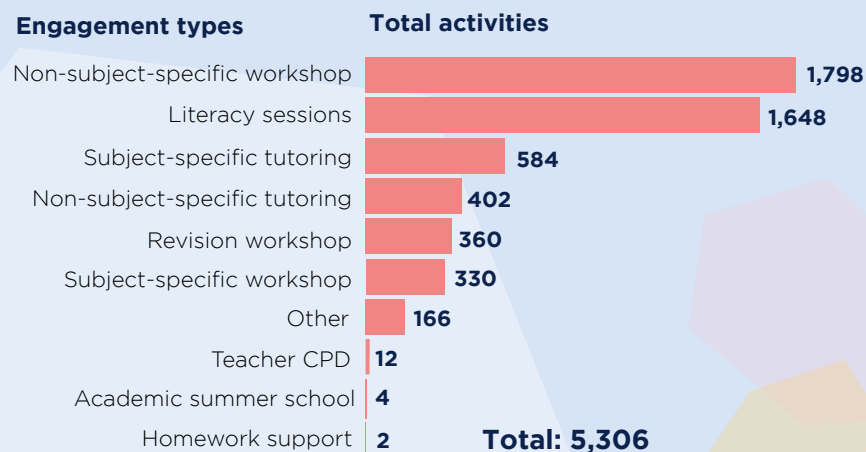
Charlton Athletic Community Trust

"Actually, like seeing the college and thinking, you know, this is a massive place. You could do so much here and that's why I wanted to try harder, like, try as much as I can anyway, in school."

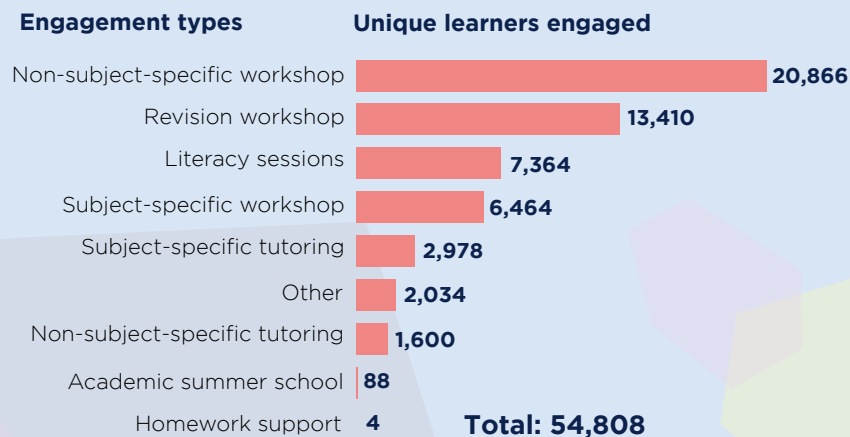
Year 10 Uni Connect learner

## Attainment-raising engagement

### Total number of activities delivered



### Total number of unique learners engaged



"I will re-consider options as I never really wanted to go, but now I will think about it."

Year 11 Uni Connect learner

"Since [the Uni Connect partnership] have been involved with us, we've gone from special measures to good and gone from being progress 8 minus 2 (bottom 10% of schools nationally) to progress 8 plus 0.24 (top 25% of schools nationally). There are a lot of factors in play, but the massive effect that being aspirational has on students is huge and seeing universities and what they can offer makes a massive difference."

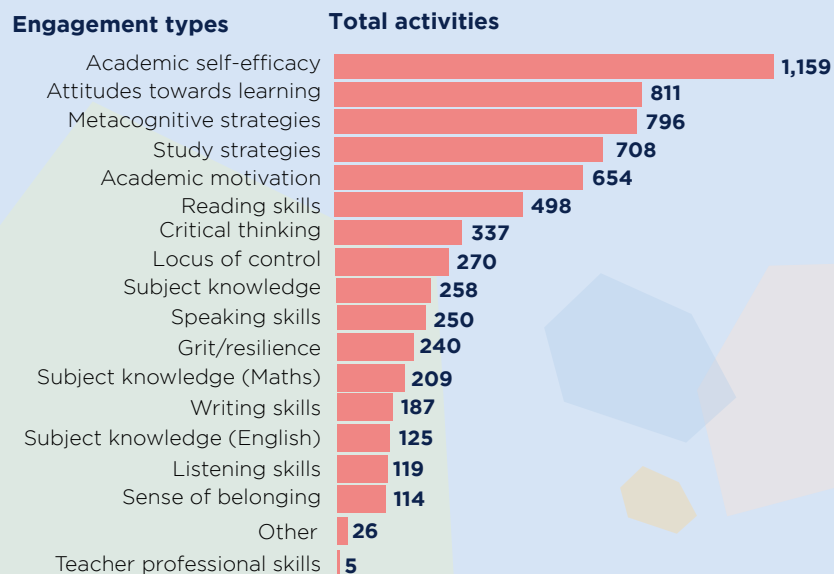
Teacher

"The students who have engaged with their [Uni Connect] sessions have developed their confidence, communication skills, and subject knowledge to an impressive degree, making them much stronger candidates for university, apprenticeships and careers."

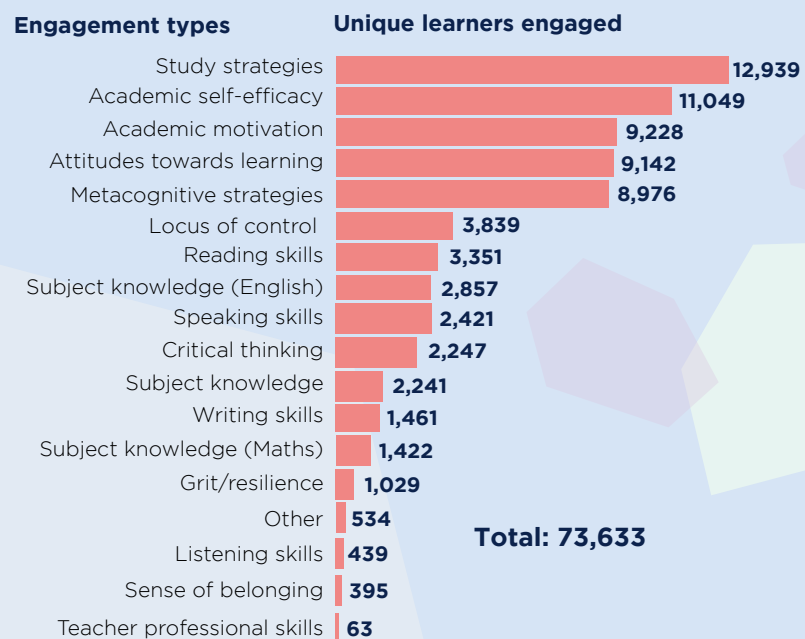
Teacher

# Attainment-raising intended outcomes

## Total number of activities focused on these outcomes



## Total number of unique learners engaged focused on these outcomes



**Total: 73,633**

"The programme gave me a bit more motivation and information about how to revise. Before, I didn't really think it was that important but then I started revising and now I'm ready."

Uni Connect learner

"[The Uni Connect programme] definitely had a positive impact on the learners. It's also had a positive impact on the school in terms of the way they engage themselves in lessons, but also in the fact that they're willing to be more ambitious."

Teacher

"I think they gave us an insight into what we could do for our future... when I saw [the Law] one, I thought oh, that's pretty cool because now I can see what I want to do."

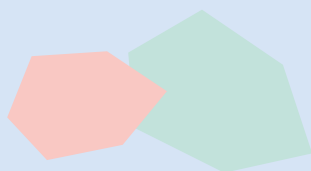
Uni Connect learner

## Future priorities



For 2024-25 and 2025-26, Uni Connect will continue to provide impartial information, advice and guidance on the different options and pathways to higher level study, alongside delivering a range of experiences of higher education and activity to help raise attainment to eligible learners.

Uni Connect partnerships will also continue to work with schools, colleges and other local partners to coordinate activity in their area to support equal access to higher level study for learners most at risk of not accessing higher education.



*"What a brilliant idea this is. To some children, it can be very daunting going to university and this may just change their minds and show them they can achieve it if they want it."*

Parent of Uni Connect learner

*"This programme has offered 30 of our year 10 learners a fantastic opportunity to find out more about university and higher education opportunities, talk to student ambassadors and experience a campus visit – the engagement on the day was very positive. Taking them on campus started conversations about future careers and the atmosphere on the coach journey back to school was incredible, listening to the young people being more curious about higher education and where it could take them in the future."*

Teacher

