

Keele and the Community working together.

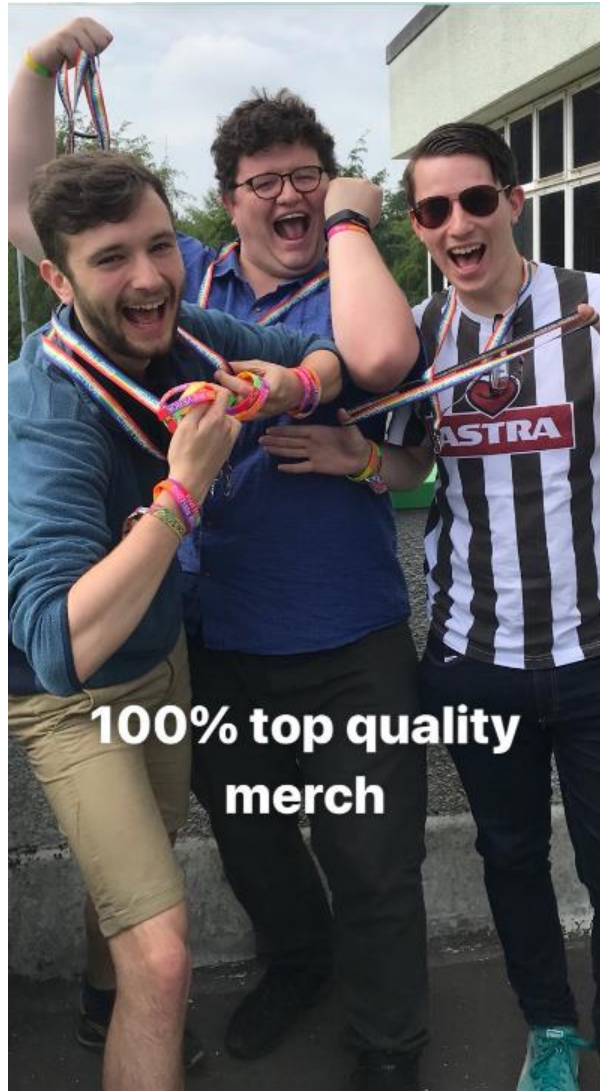
Keele University and KeeleSU working together and with local and national organisations to enhance student safety at Keele. Keele share their experience of collaboration and partnership working



Challenges and how we overcame these



Challenges and how we overcame these



**100% top quality
merch**



HATE IS #NEVEROK

JOIN US FOR AN EVENT TO RAISE
AWARENESS OF ISSUES SURROUNDING
HATE CRIME FEATURING TALKS FROM
STOP HATE UK, STAFFORDSHIRE POLICE
AND CHALLENGE NORTH STAFFS

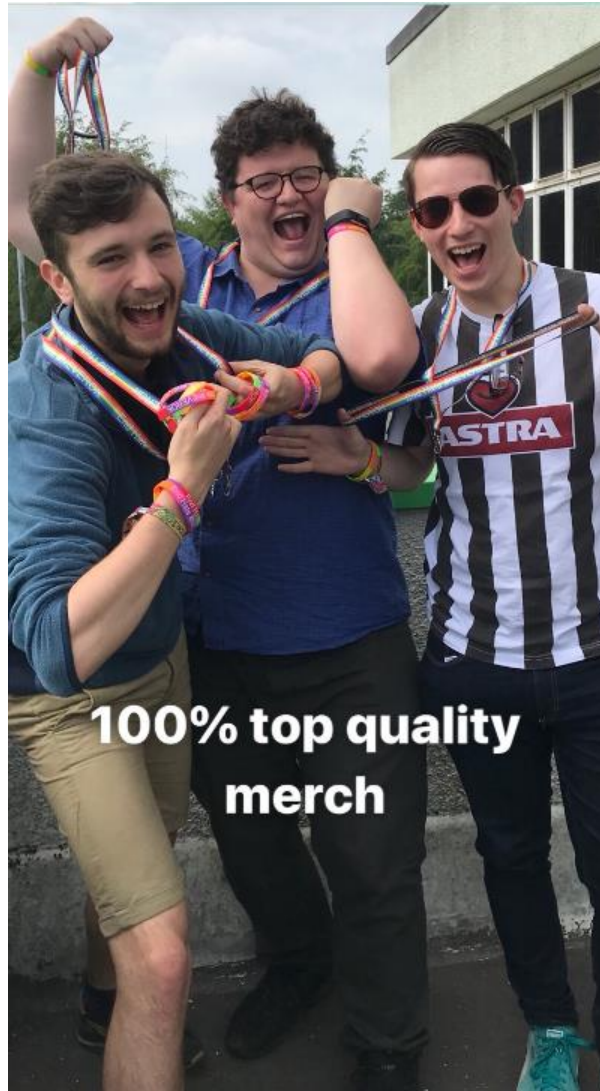
THURSDAY MARCH 14TH
12:00-14:00
DH1.13
LUNCH PROVIDED



EMAIL [K.V.HOLLOWAY@KEELE.AC.UK](mailto:k.v.holloway@keele.ac.uk) WITH ANY QUESTIONS



Challenges and how we overcame these



**100% top quality
merch**

**HATE IS
#NEVEROK**

JOIN US FOR AN EVENT TO RAISE
AWARENESS OF ISSUES SURROUNDING
HATE CRIME FEATURING TALKS FROM
STOP HATE UK, STAFFORDSHIRE POLICE
AND CHALLENGE NORTH STAFFS

THURSDAY MARCH 14TH
12:00-14:00
DH1 1T
LUNCH PROVIDED

EMAIL [K.V.HOLLOWAY@KEELE.AC.UK](mailto:k.v.holloway@keele.ac.uk) WITH ANY QUESTIONS

The poster features a rainbow diamond border at the top and bottom. The #NEVEROK logo is a black diamond shape with a white outline and the text '#NEVER OK' inside. The Keele University logo and social media icons are at the bottom right.

Challenges and how we overcame these



#NEVER OK

Tackling Hate Crime

A Student Guide



HE PULLED OFF HER HEADSCARF ON THE BUS...


...I asked myself #isthisOK? I decided it wasn't, so I sat next to her and made sure she was safe.

Islamophobia is #NeverOK. You can play a role in preventing harassment and abuse. If you're unsure, ask yourself #IsThisOK? Chances are it's #NeverOK.

KeeleSU.com/NeverOK
Keele.ac.uk/neverok

#ISLAMOFOBIA NEVER OK

KeeleSU is a Charitable Incorporated Organisation - No. 1173328



I HEARD THEM SHOUTING OFFENSIVE ABUSE AT HER OUTSIDE THE LIBRARY

She looked distressed, so I asked myself #IsThisOK? I knew it wasn't so I had a quick chat with her, and we walked inside together.

Islamophobia is #NeverOK. You can play a role in preventing harassment and abuse. If you're unsure, ask yourself #IsThisOK? Chances are it's #NeverOK.

KeeleSU.com/NeverOK
Keele.ac.uk/neverok

#ISLAMOFOBIA NEVER OK

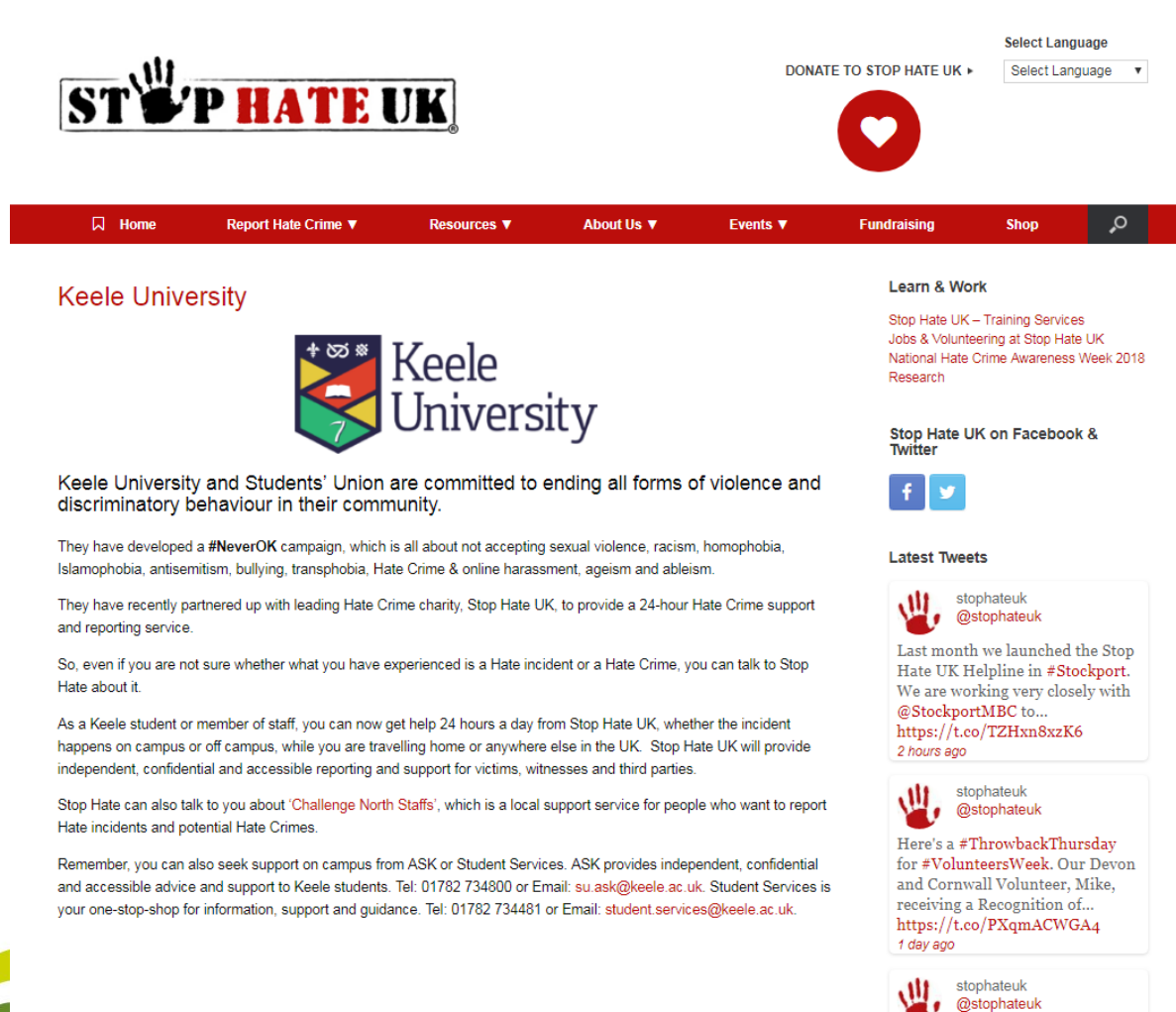
KeeleSU is a Charitable Incorporated Organisation - No. 1173328

Challenges and how we overcame these

With the plethora of posters on campus, these stopped me in my tracks. The **#neverok** campaign with a simple message. Be a decent human!



Challenges and how we overcame these



The screenshot shows the Stop Hate UK website. At the top left is the logo with a handprint. To the right is a 'DONATE TO STOP HATE UK' button with a heart icon and a 'Select Language' dropdown menu. Below this is a navigation bar with links for Home, Report Hate Crime, Resources, About Us, Events, Fundraising, and Shop. The main content area is divided into two columns. The left column features the Keele University logo and text stating their commitment to ending violence and discriminatory behavior, along with details about the #NeverOK campaign and their partnership with Stop Hate UK. The right column has a 'Learn & Work' section with links to training services and research, a 'Stop Hate UK on Facebook & Twitter' section with social media icons, and a 'Latest Tweets' section with three tweets from @stophateuk.


STOP HATE UK

DONATE TO STOP HATE UK

Select Language

Home Report Hate Crime Resources About Us Events Fundraising Shop

Keele University



Keele University and Students' Union are committed to ending all forms of violence and discriminatory behaviour in their community.

They have developed a **#NeverOK** campaign, which is all about not accepting sexual violence, racism, homophobia, Islamophobia, antisemitism, bullying, transphobia, Hate Crime & online harassment, ageism and ableism.

They have recently partnered up with leading Hate Crime charity, Stop Hate UK, to provide a 24-hour Hate Crime support and reporting service.

So, even if you are not sure whether what you have experienced is a Hate incident or a Hate Crime, you can talk to Stop Hate about it.

As a Keele student or member of staff, you can now get help 24 hours a day from Stop Hate UK, whether the incident happens on campus or off campus, while you are travelling home or anywhere else in the UK. Stop Hate UK will provide independent, confidential and accessible reporting and support for victims, witnesses and third parties.

Stop Hate can also talk to you about 'Challenge North Staffs', which is a local support service for people who want to report Hate incidents and potential Hate Crimes.


Remember, you can also seek support on campus from ASK or Student Services. ASK provides independent, confidential and accessible advice and support to Keele students. Tel: 01782 734800 or Email: su.ask@keele.ac.uk. Student Services is your one-stop-shop for information, support and guidance. Tel: 01782 734481 or Email: student.services@keele.ac.uk.

Learn & Work


Stop Hate UK – Training Services
Jobs & Volunteering at Stop Hate UK
National Hate Crime Awareness Week 2018
Research

Stop Hate UK on Facebook & Twitter


Latest Tweets

 [stophateuk](#)
[@stophateuk](#)

Last month we launched the Stop Hate UK Helpline in **#Stockport**. We are working very closely with **@StockportMBC** to...
<https://t.co/TZHxn8xzK6>
2 hours ago

 [stophateuk](#)
[@stophateuk](#)

Here's a **#ThrowbackThursday** for **#VolunteersWeek**. Our Devon and Cornwall Volunteer, Mike, receiving a Recognition of...
<https://t.co/PXqmACWGA4>
1 day ago

 [stophateuk](#)
[@stophateuk](#)



The poster features the Stop Hate UK logo at the top, followed by the phone number 0800 138 1625 and the text '24 HOUR HELP LINE'. Below this is a '#NEVER OK' logo and the slogan 'ENDING ALL FORMS OF VIOLENCE AND DISCRIMINATORY BEHAVIOUR IN OUR COMMUNITY.' The bottom section has a colorful geometric pattern and the text 'Stepping In and Stepping Up' and 'Being an Active Bystander and #NeverOK'. Logos for Keele University and the Students' Union are in the bottom right corner.

STOP HATE UK
0800 138 1625
24 HOUR HELP LINE

#NEVER OK

ENDING ALL FORMS OF VIOLENCE AND DISCRIMINATORY BEHAVIOUR IN OUR COMMUNITY.

Stepping In and Stepping Up
Being an Active Bystander and #NeverOK

Keele UNIVERSITY

**WORKING WITH
STAKEHOLDERS
AND COMMUNITY
ENGAGEMENT IN
THE SEXUAL
VIOLENCE
RESPONSE AT
KEELE**



Keele
UNIVERSITY

Student Services

It's the Keele difference

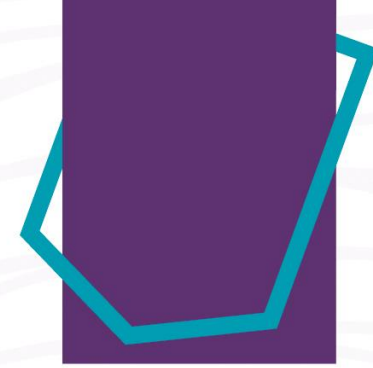
Working with stakeholders

- Why? Informed and supported practice e.g. specialist counselling
- Who? Rape Crisis, Women's Aid, Survivors UK (men), SARC, local police (possibly), private providers such as Consent Collective
- Challenges? Getting access, funding, maintaining relationships, building new ones - needs to be mutually beneficial relationship
- Example – Savana – on campus 2/3 times per year, looking to work with them on training provision, fundraising for them

Community Engagement



- Who? Whole institution approach – staff and students, top-down support
- Why? Anyone could take a first disclosure, could be supporting a survivor or someone accused, or could be victim themselves – awareness = more responsive
- How? Events – bring people together to address a common cause
- Challenge – political and sensitive and taboo subject – offer range of engagement options
 - SV Awareness Week, Staff Advisory Group, Bystander Training, Disclosure Training. SV Awareness Week events – Art for Awareness, 12 hr umbrellathon – uptake from staff and students.



THEY SAID THE LENGTH OF HER DRESS MEANT SHE WAS 'ASKING FOR IT'...

... I asked myself #isthisOK? and I knew it didn't feel right so I told them the way you dress doesn't mean 'yes'.

Victim Blaming is #NeverOK. You can play a role in preventing violence and abuse before it happens. If you're unsure, ask yourself #IsThisOK? Chances are it's #NeverOK

KeeleSU.com/NeverOK

KeeleSU is a Charitable Incorporated Organisation - No. 1072028

